



TIIG

INJURY SURVEILLANCE IN THE NORTH WEST OF ENGLAND

Cumberland Infirmary Emergency Department

Monthly Bulletin: April 2012 to March 2013

This bulletin provides a breakdown of all injury attendances at Cumberland Infirmary Emergency Department (ED) between April 2012 and March 2013.

Between April 2012 and March 2013 there were 18,691 ED attendances. The month with the highest attendance was March with 1,968 attendances (**Figure 1**). There were more male than female attendances presenting at the ED (males=9,928; 53%).

Figure 2 illustrates the age group of ED attendances for each month. Almost a third (32%) of attendances to Cumberland Infirmary ED were aged 30-59 years (n=5,912) and 26% were 15-29 years old (n=4,930).

The source of referral of ED attendances is detailed in **Table 1**. Over six in ten (62%) of injury attendances were self-referrals (n=11,678) and over a fifth (23%) were brought in by emergency services (n=4,216).

Table 2 shows the injury group of ED attendances. The majority (78%) of injury attendances were recorded as other injury (n=14,645). Sports injury accounted for 7% of attendances (n=1,344), deliberate self-harm 5% (n=1,011) and road traffic collisions 5% (n=960). Assaults accounted for 4% of all injury attendances (n=731).

The location of incident is displayed in **Table 3**. Just over half (51%) of injuries took place in the home (n=9,615) and 11% occurred in a public place (n=1,973).

Table 4 displays the discharge destination for all injury attendances to Cumberland Infirmary ED. Over half (53%) of all injury attendees were discharged with no follow-up treatment required (n=9,989). Sixteen per cent were admitted to hospital (n=2,924) and 14% were referred to an out-patient clinic (n=2,629).

Assault attendances

Between April 2012 and March 2013 there were 731 assault attendances to Cumberland Infirmary ED. The month with the highest attendance was January with 77 attendances (**Figure 3**). There were significantly more male than female assault attendances (males=570; 78%).

Table 5 illustrates the age group of assault attendances for each month. Fifty-six per cent were aged 15-29 years (n=413) and 37% were 30-59 years old (n=270).

Table 6 shows the incident location of assault attendances during April 2012 to March 2013. Three hundred and twenty-four assaults took place in 'other location' (44%) and 37% occurred in a public place (n=274). A seventh (14%) of assaults took place in the home (n=103).

The discharge destination of assault attendances to the ED are displayed in **Table 7**. Almost six in ten (59%) attendees were discharged (n=434) and just over a fifth (21%) required follow-up treatment (n=152).

Figure 1: Gender of ED injury attendances by month, April 2012 to March 2013

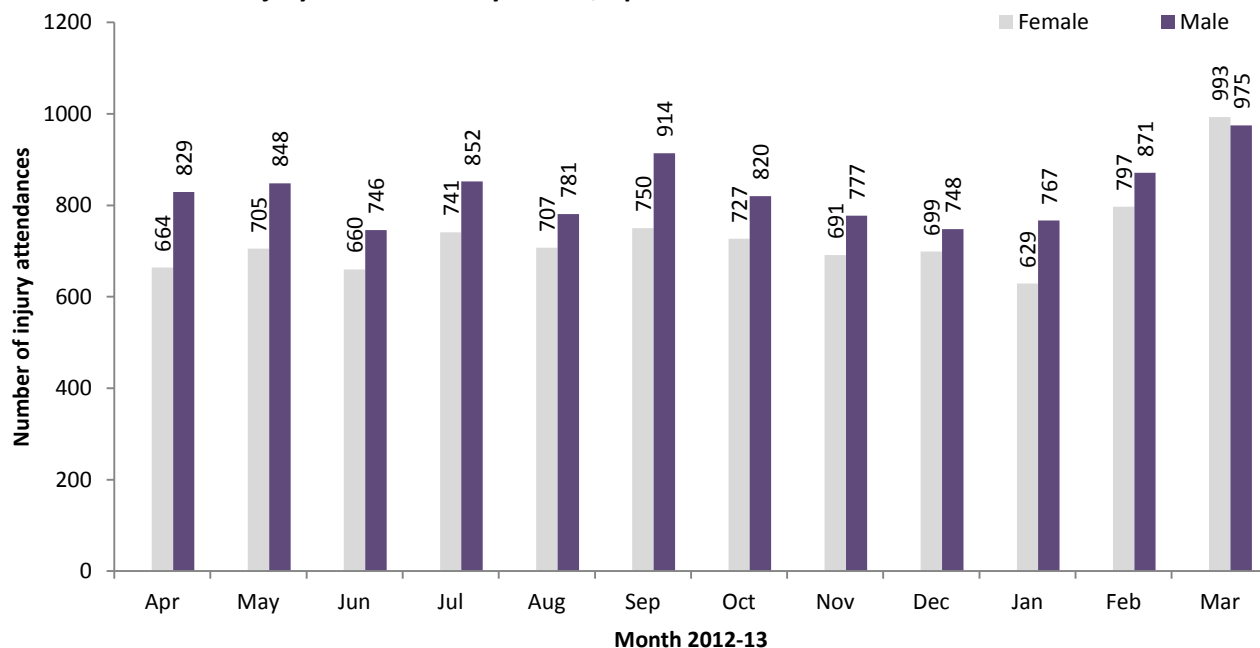


Figure 2: Age group of ED injury attendances by month, April 2012 to March 2013

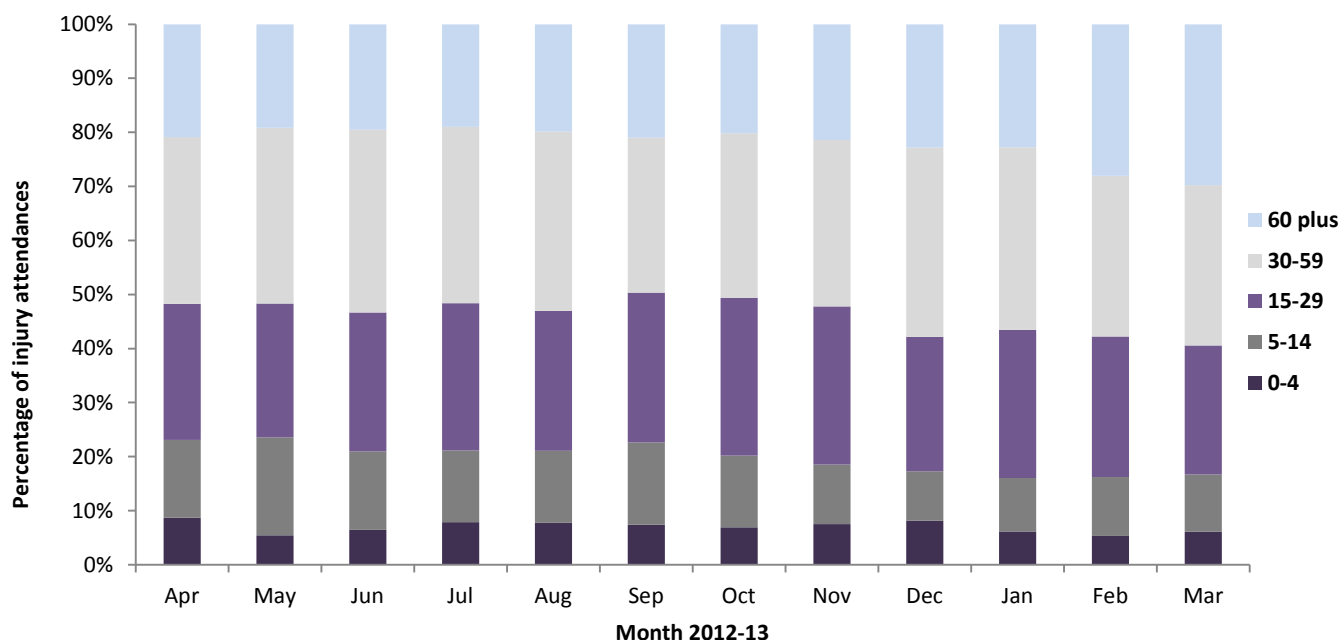


Table 1: ED injury attendances by source of referral and month, April 2012 to March 2013^{1,2}

Source of referral	Apr	May	Jun	Jul	Aug	Sep	Oct	Nov	Dec	Jan	Feb	Mar	Total	%
Self-referral	1008	1045	912	1035	979	1080	1061	929	888	881	865	995	11678	62
Emergency services	337	328	329	374	345	364	307	364	369	349	370	380	4216	23
GP	49	75	57	51	44	70	57	49	66	69	290	414	1291	7
Other	46	39	50	67	67	59	58	49	52	41	67	107	702	4
Work	24	34	27	23	33	39	33	43	33	30	31	29	379	2
Health care provider	21	17	18	27	12	32	14	21	9	16	22	26	235	1
Police	5	8	10	9	7	8	11	***	11	7	15	***	96	1
Educational establishment	***	<10	***	<10	***	<15	<10	9	<20	***	<10	14	89	0
LA social services	***	***	***	***	***	***	***	***	***	***	***	***	5	0
Total	1490	1553	1403	1593	1487	1663	1547	1464	1446	1393	1668	1965	18691	100

¹ Please note that for all tables, all numbers less than five have been suppressed (with ***) in line with patient confidentiality and if there is only one number less than five in a category then two numbers will be suppressed to prevent back calculations from totals.

² GP=General Practitioner; LA=Local Authority

Table 2: ED injury attendances by injury group and month, April 2012 to March 2013³

Injury group	Apr	May	Jun	Jul	Aug	Sep	Oct	Nov	Dec	Jan	Feb	Mar	Total	%
Other injury	1203	1237	1072	1239	1168	1288	1184	1107	1158	1047	1329	1613	14645	78
Sports injury	115	105	85	107	103	138	145	110	61	97	133	145	1344	7
DSH	65	76	85	102	83	88	86	91	101	79	76	79	1011	5
RTC	67	85	95	82	80	76	61	101	62	96	75	80	960	5
Assault	43	50	69	63	54	74	71	59	65	77	55	51	731	4
Total	1493	1553	1406	1593	1488	1664	1547	1468	1447	1396	1668	1968	18691	100

Table 3: ED injury attendances by location of incident and month, April 2012 to March 2013⁴

Location	Apr	May	Jun	Jul	Aug	Sep	Oct	Nov	Dec	Jan	Feb	Mar	Total	%
Home	815	772	647	774	788	805	755	706	753	739	920	1141	9615	51
Other	403	409	475	534	498	506	538	398	408	413	448	557	5587	30
Public place	165	206	161	184	137	185	93	192	180	124	209	137	1973	11
Work	<90	87	70	62	<70	94	65	92	46	63	42	57	823	4
Educational establishment	***	79	53	39	***	74	96	80	60	57	49	76	693	4
Total	1493	1553	1406	1593	1487	1664	1547	1468	1447	1396	1668	1968	18691	100

Table 4: ED injury attendances by discharge destination and month, April 2012 to March 2013

Discharge destination	Apr	May	Jun	Jul	Aug	Sep	Oct	Nov	Dec	Jan	Feb	Mar	Total	%
Discharged - did not require any follow up treatment	853	983	898	885	792	833	743	729	723	773	829	948	9989	53
Admitted to hospital	171	174	170	191	184	193	187	211	194	182	463	604	2924	16
Referred to other out-patient clinic	228	190	169	236	248	272	253	224	219	200	187	203	2629	14
Discharged - follow up treatment to be provided by GP	127	105	74	119	140	164	195	165	166	126	69	98	1548	8
Referred to A&E clinic	47	37	25	51	33	83	52	59	60	49	42	34	572	3
Referred to other health care professional	17	29	36	34	39	37	51	34	29	20	31	32	389	2
Left department before being treated	32	27	19	31	20	51	35	22	33	23	25	20	338	2
Other	***	***	***	29	12	18	14	15	13	11	12	15	146	1
Transferred to other health care provider	11	5	5	11	16	8	13	6	7	12	6	10	110	1
Left department having refused treatment	5	***	7	***	***	***	***	***	***	***	***	***	<50	0
Died in department	***	***	***	***	***	***	***	***	***	***	***	***	***	0
Total	1493	1550	1403	1593	1484	1659	1543	1465	1444	1396	1664	1964	18691	100

³ DSH=Deliberate self-harm; RTC=Road traffic collision⁴ Educational establishment includes: educational establishment; school other; school; school playground; and, school sport. Public place includes public place and playing out.

Assaults

Figure 3: Number of ED assault attendances by gender and month, April 2012 to March 2013

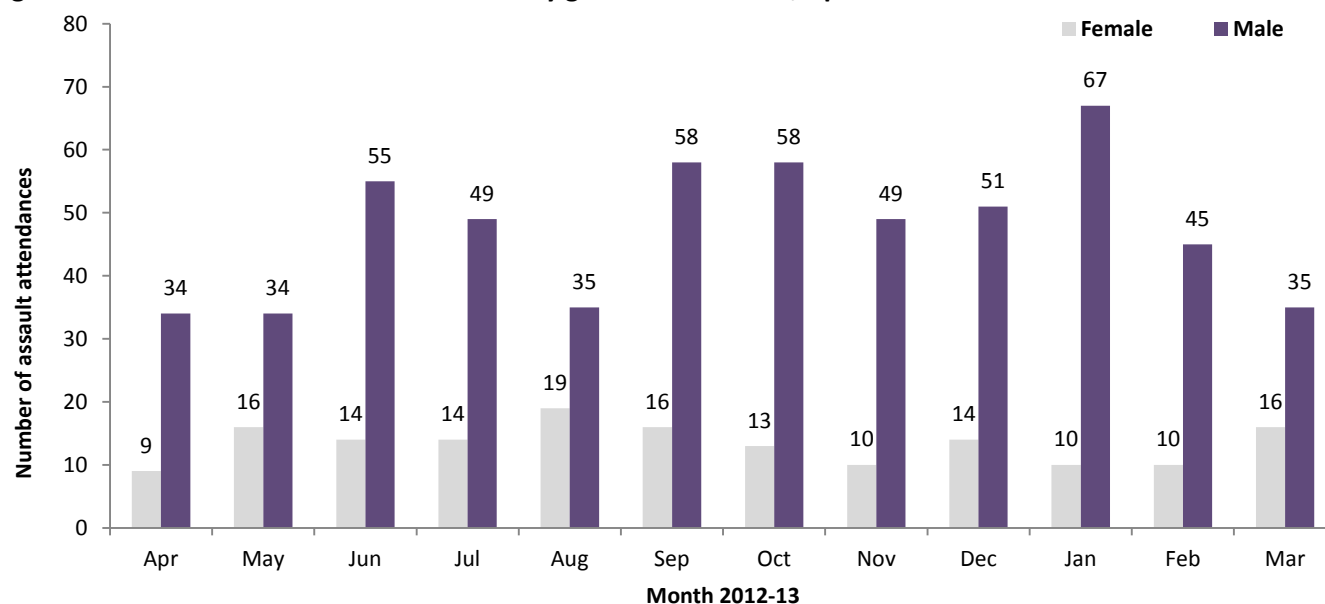


Table 5: ED assault attendances by age group and month, April 2012 to March 2013

Age group	Apr	May	Jun	Jul	Aug	Sep	Oct	Nov	Dec	Jan	Feb	Mar	Total	%
0-4	***	***	***	***	***	***	***	***	***	***	***	***	***	1
5-14	***	6	***	***	***	***	5	***	***	***	***	***	33	5
15-29	25	28	40	33	30	47	41	33	41	41	33	21	413	56
30-59	16	12	26	26	20	24	25	22	22	31	19	27	270	37
60 plus	***	***	***	***	***	***	***	***	***	***	***	***	<15	2
Total	43	50	69	63	54	74	71	59	65	77	55	51	731	100

Table 6: ED assault attendances by location of incident and month, April 2012 to March 2013

Location	Apr	May	Jun	Jul	Aug	Sep	Oct	Nov	Dec	Jan	Feb	Mar	Total	%
Other	17	20	29	32	25	32	43	17	32	32	22	23	324	44
Public place	19	15	31	24	17	27	15	34	27	25	26	14	274	37
Home	7	9	<6	6	12	11	10	***	6	19	5	9	103	14
Educational establishment	***	***	***	***	***	***	***	***	***	***	***	***	20	3
Work	***	***	***	***	***	***	***	***	***	***	***	***	10	1
Total	43	50	69	63	54	74	71	59	65	77	55	51	731	100

Table 7: ED assault attendances by discharge destination and month, April 2012 to March 2013

Disposal	Apr	May	Jun	Jul	Aug	Sep	Oct	Nov	Dec	Jan	Feb	Mar	Total	%
Discharged	27	35	51	35	34	39	36	31	36	45	35	30	434	59
Follow-up	11	***	<10	9	11	17	20	16	17	16	13	12	152	21
Other	***	7	<10	8	***	11	7	***	<10	9	<10	<10	78	11
Admitted	***	<10	***	11	<10	7	8	<10	***	7	***	***	67	9
Total	43	50	69	63	54	74	71	59	65	77	55	51	731	100

Published May 2013

Karen Swarbrick (TIIG Researcher/Analyst)

Centre for Public Health, Liverpool John Moores University, 2nd Floor, Henry Cotton Building, Liverpool, L3 2ET

Tel: 0151 231 4498 Email: K.A.Swarbrick@ljmu.ac.uk

Website: www.tiig.info (please note data requests should be made through the website)